

Felt roller lubricators WF / WG

All-covering lubrication for metal coils and blanks



Felt roller lubricator WF 32 F

Lubrication widths (mm) 020/040/080/160/300 *

* Standard sizes, individual configurations available on request



PRECISION

- Compact felt roller lubricator for very thin material layers of up to 1 mm (recommended value)
- Two-sided, consistent application of lubricants
- Lubricant infeed through hollow axles inside the rollers
- Roller coating made of wear-resistant felt
- Recommended for viscosities of up to 100 mm²/sec

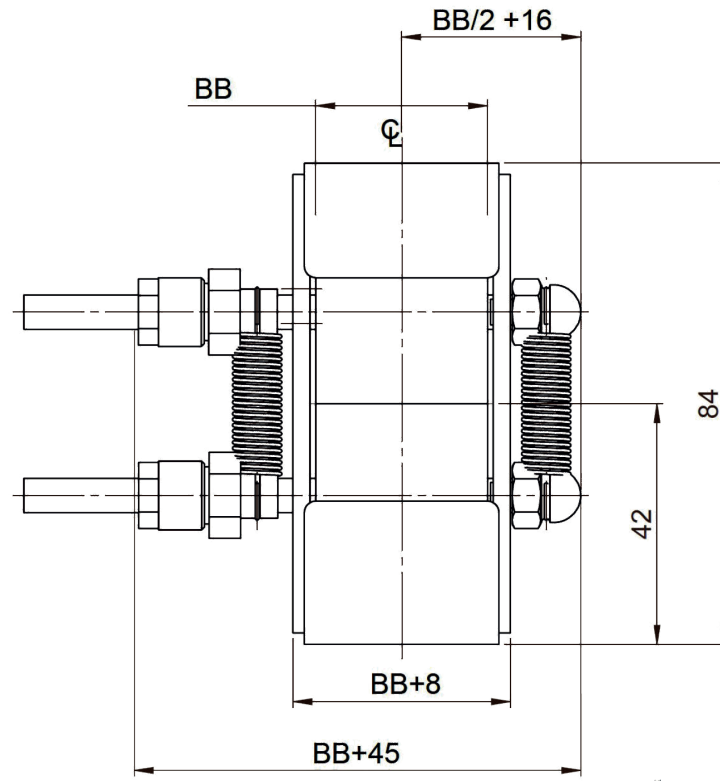
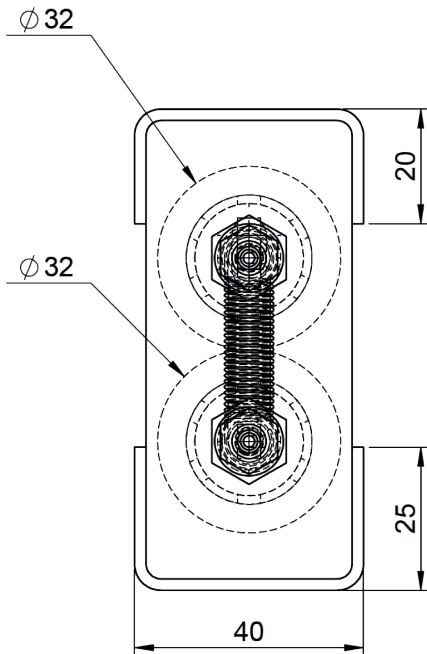
VERSATILITY

- Standard configuration with adjusting spring
- Optional: adjustment through removable rollers or pneumatic lifting cylinders*
- Optional: operation with two oil grades (available for selected configurations)

FIELDS OF APPLICATION (SELECTION)

- Contact components: tab connectors, electric switching contacts, contact springs
- Punched and bent parts: medical technology, microelectronics, precision engineering
- Fine blanked parts: gear/ engine technology, pumps

Felt roller lubricator WF 32 F: Dimensions



BB = max. lubrication width

| CONFIGURATION WF 32 | WF 32-20 | WF 32-40 | WF 32-80 | WF 32-160 | WF 32-300 |
|---|----------|----------|----------|-----------|-----------|
| Lubrication width max. | 20 | 40 | 80 | 160 | 300 |
| Overall width inkl. spring, connection | 65 | 85 | 125 | 205 | 345 |
| Overall height | 84 | | | | |
| Infeed height (coil intake) | 42 | | | | |
| Roller diameter | 32 | | | | |
| Length in travel direction | 40 | | | | |
| Coil thickness max.* <small>*Recommended value</small> | 1 | | | | |

Felt roller lubricator WF 60 F

Lubrication widths (mm) 040/080/160/300/500/700/800 *

* Standard sizes, individual configurations available on request



PRECISION

- Compact felt roller lubricator for material layers of up to 2 mm (recommended value)
- Two-sided, consistent application of lubricants
- Lubricant infeed through hollow axles inside the rollers
- Roller coating made of wear-resistant felt
- Recommended for viscosities of up to 120 mm²/sec

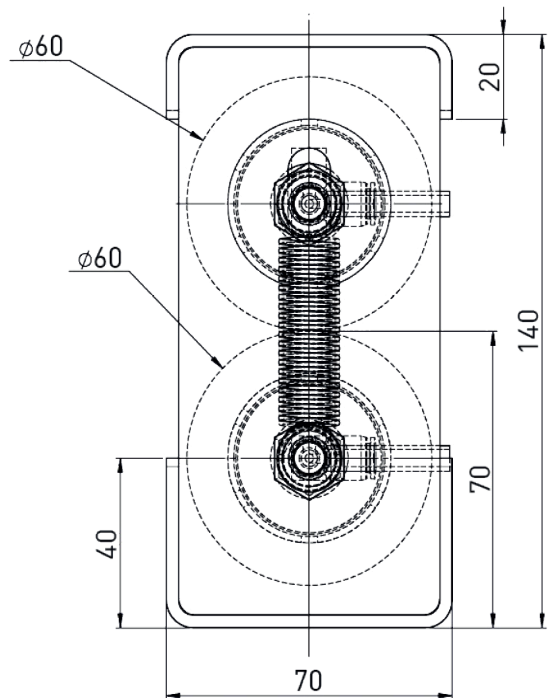
VERSATILITY

- Standard configuration with adjusting spring
- Optional: adjustment through removable rollers or pneumatic lifting cylinders (available for selected configurations)
- Dosing system available with/without integrated control unit or with terminal box

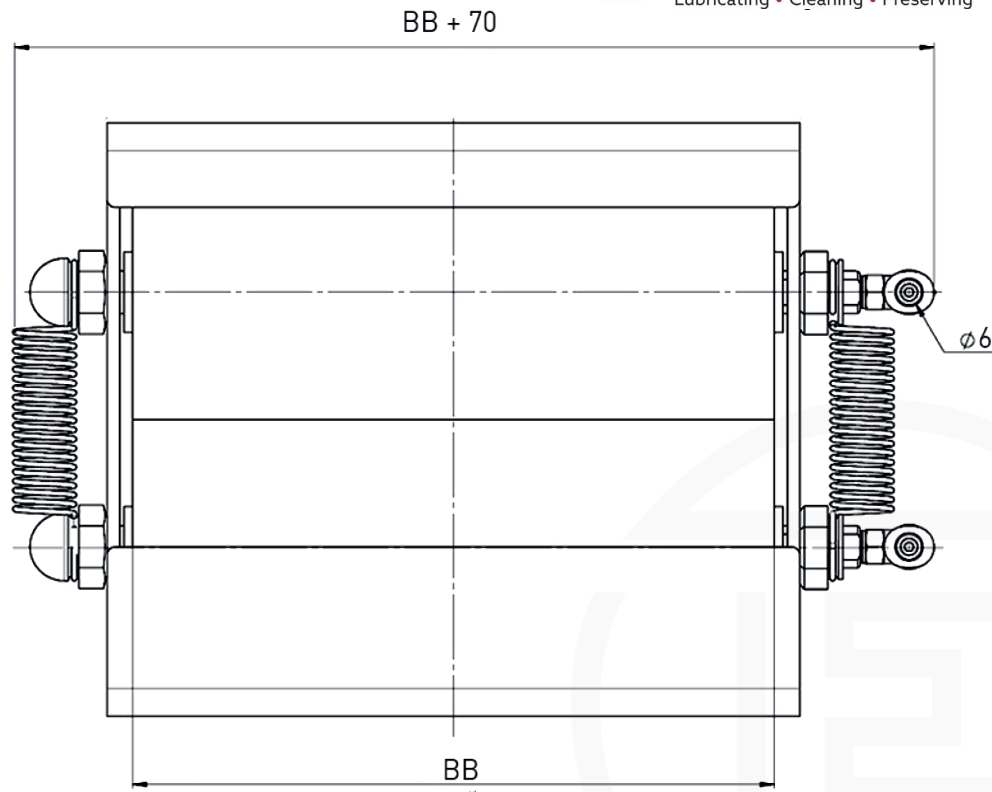
FIELDS OF APPLICATION (SELECTION)

- Contact components: tab connectors, electric switching contacts, contact springs
- Punched and bent parts: medical technology, microelectronics, precision engineering
- Fine blanked parts: gear/engine technology, pumps

Felt roller lubricator WF 60 F: Dimensions



BB = max. lubrication width



Felt roller lubricator WF 60 F: Standard configurations

| CONFIGURATION WF 60 | WF 60-40 | WF 60-80 | WF 60-160 | WF 60-300 | WF 60-500 | WF 60-700 | WF 60-800 |
|---|----------|----------|-----------|-----------|-----------|-----------|-----------|
| Lubrication width max. | 40 | 80 | 160 | 300 | 500 | 700 | 800 |
| Overall width inkl. spring, connection | 110 | 150 | 230 | 370 | 570 | 770 | 870 |
| Overall height | 140 | | | | | | |
| Infeed height (coil intake) | 70 | | | | | | |
| Roller diameter | 60 | | | | | | |
| Length in travel direction | 70 | | | | | | |
| Coil thickness max.* <small>*Recommended value</small> | 2 | | | | | | |

Felt roller lubricator WF 60 WG

Lubrication widths (mm) 200/300/500/650/800 *

* Standard sizes, individual configurations available on request



PRECISION

- Compact felt roller lubricator for material layers of up to 5 mm (recommended value)
- Two-sided, consistent application of lubricants
- Lubricant infeed through hollow axles inside the rollers
- Roller coating made of wear-resistant felt
- Recommended for viscosities of up to 120 mm²/sec

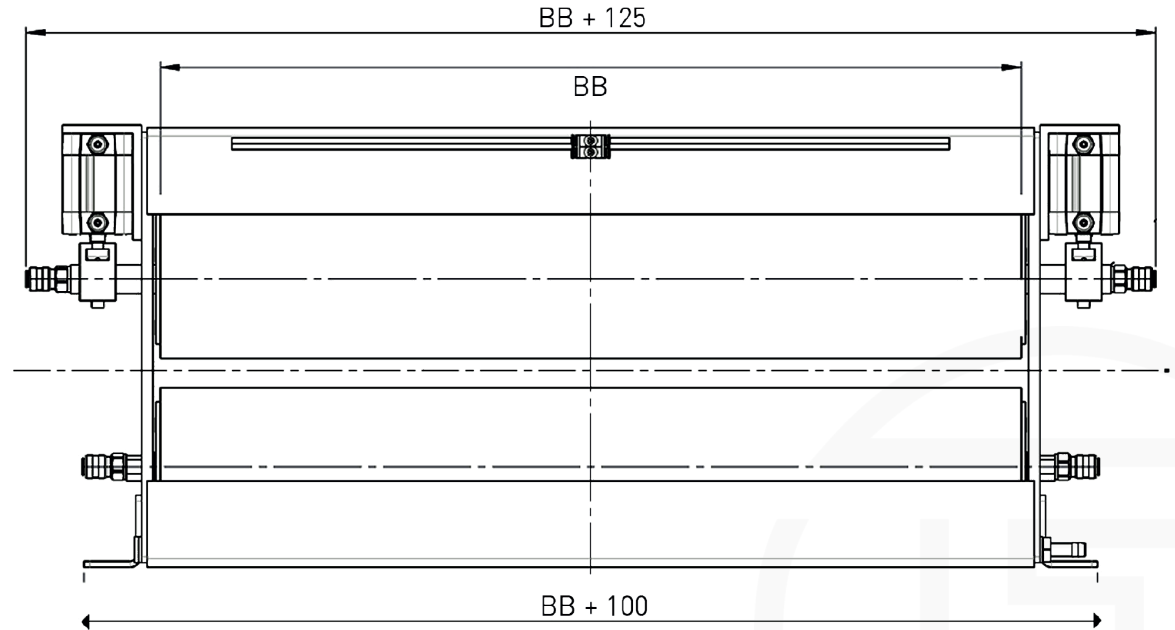
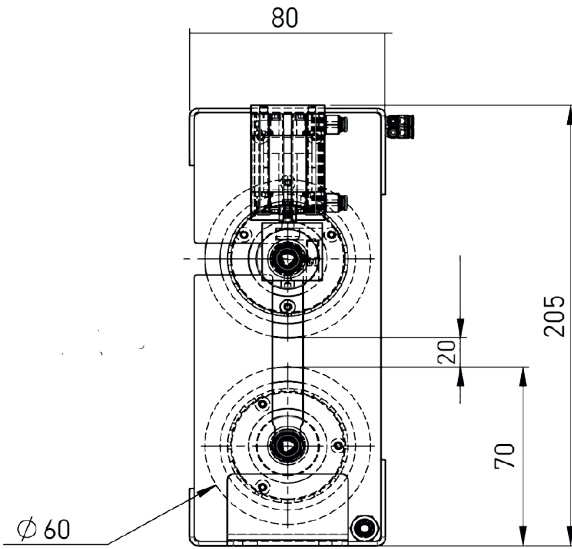
VERSATILITY

- Adjustment through removable rollers and pneumatic lifting cylinders
- Dosing system available with/without integrated control unit or with terminal box

FIELDS OF APPLICATION (SELECTION)

- Contact components: tab connectors, electric switching contacts, contact springs
- Punched and bent parts: medical technology, microelectronics, precision engineering
- Fine blanked parts: gear/engine technology, pumps

Felt roller lubricator WF 60 WG: Dimensions



BB = max. lubrication width

| CONFIGURATION WF 60 WG | WF 60-200 | WF 60-300 | WF 60-500 | WF 60-650 | WF 60-800 |
|---|-----------|-----------|-----------|-----------|-----------|
| Lubrication width max. | 200 | 300 | 500 | 650 | 800 |
| Overall width inkl. lifting cylinder, connection | 325 | 425 | 625 | 775 | 925 |
| Overall height | 205 | | | | |
| Infeed height (coil intake) | 70 | | | | |
| Roller diameter | 60 | | | | |
| Length in travel direction | 80 | | | | |
| Coil thickness max.* *Recommended value | 5 | | | | |



Wechselwalzenbeöler WF 60 WG DH

Konfiguration mit Doppelhubzylinder (obere/untere Walze)

Felt roller lubricator WF 110 WG

Lubrications widths (mm) 500/650/800/1000/1300/1600 *

* Standard sizes, individual configurations available on request



PRECISION

- Compact felt roller lubricator for material layers of up to 10 mm (recommended value)
- Two-sided, consistent application of lubricants
- Lubricant infeed through hollow axles inside the rollers
- Roller coating made of wear-resistant felt
- Recommended for viscosities of up to 150 mm²/sec

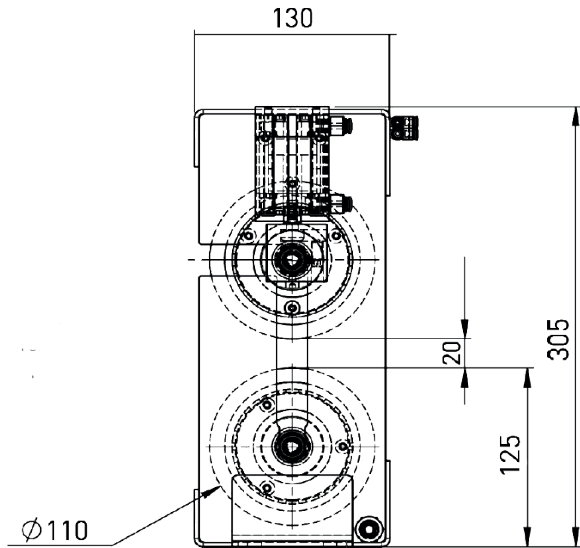
VERSATILITY

- Adjustment through removable rollers and pneumatic lifting cylinders
- Dosing system available with/without integrated control unit or with terminal box

FIELDS OF APPLICATION (SELECTION)

- Contact components: tab connectors, electric switching contacts, contact springs
- Punched and bent parts: medical technology, microelectronics, precision engineering
- Fine blanked parts: gear/engine technology, pumps

Felt roller lubricator WF 110 WG: Dimensions



BB = max. lubrication width

Felt roller lubricator WF 110 WG: Standard configurations

| CONFIGURATION WF 110 WG | WF110-500 | WF 110-650 | WF 110-800 | WF110-1000 | WF110-1300 | WF 110-1600 |
|---|-----------|------------|------------|------------|------------|-------------|
| Lubrication width max. | 500 | 650 | 800 | 1000 | 1300 | 1600 |
| Overall width inkl. lifting cylinder, connection | 685 | 835 | 985 | 1185 | 1485 | 1785 |
| Overall height | 305 | | | | | |
| Infeed height (coil intake) | 125 | | | | | |
| Roller diameter | 110 | | | | | |
| Length in travel direction | 130 | | | | | |
| Coil thickness max.* <small>*Recommended value</small> | 10 | | | | | |

Felt roller lubricator WF / WG

Configuration options

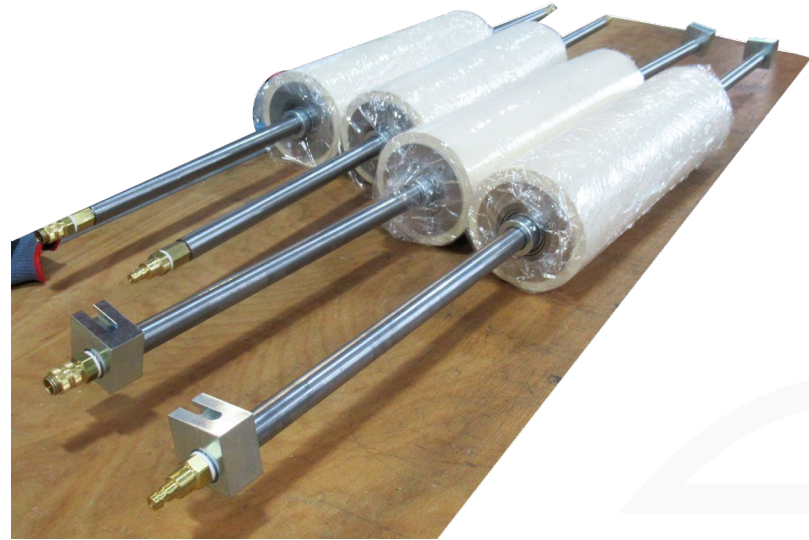
Felt roller lubricator WF / WG: Configuration options

| OPTIONS WF/WG | WF 32 | WF 60 | WF 60 WG | WF 110 WG |
|---|-------|-------|----------|-----------|
| Configuration with pneumatic lifting cylinder | no | no | yes | yes |
| Operation with exchangeable rollers | no | no | yes | yes |
| Eckardt dosing system with dosing control unit | yes | yes | yes | yes |
| Eckardt dosing system without dosing control unit | yes | yes | yes | yes |
| Eckardt dosing system for two oil grades | no | no | yes | yes |
| Tube kit | no | no | yes | yes |
| Telescopic extension | no | no | yes | yes |
| Individual triggering of upper/lower roller | yes | yes | yes | yes |

Felt roller lubricator WG

Exchangeable rollers





- Exchangeable rollers can be used for the application of different oil grades.
- The roller casing includes a notch on either side into/from which another pair of rollers is effortlessly inserted/removed.
- In case the entire lubrication width of the system is not required for the processing, it is possible to use a pair of smaller rollers and save a substantial amount of lubricant.

Eckardt Systems



Second generation family-owned business

- 100% family-owned
- ca. 40 staff
- In-house electronics department (development, testing lab)
- In-house service team of electrical engineers
- Worldwide customer base



■ Eckardt machines in use

Consulting

- Extensive survey of existing production environments
- Development of solution concepts, integration in existing processes

Engineering

- Individual modifications to our technology based on customer requirements
- Addition of control systems, development of control concepts

Installation & commissioning

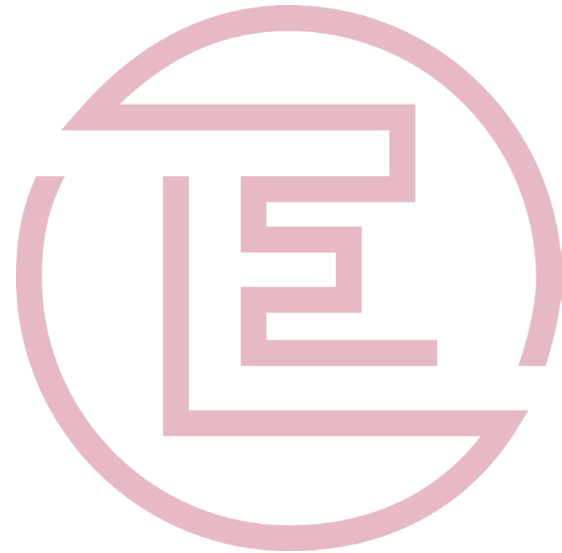
- System integration in existing workflows
- Fine adjustments and necessary adaptations to ensure operational readiness

Service & maintenance

- Regular maintenance of our systems carried out by service staff of our own
- Customer-specific spare part bundles and quick, flexible procurement

Retrofitting

- System modernization with respect to all mechanical and electrical parts
- Particular focus on controls with paying attention to all components involved



Contact us

Thank you!

Eckardt Systems GmbH

Westliche Gewerbestr. 2

D-75015 Bretten

Tel. +49 (0)7252 9420-0

info@eckardt-systems.com

www.eckardt-systems.com

